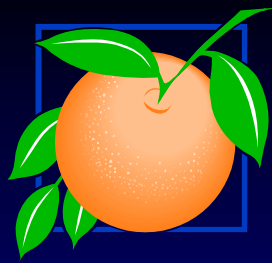


*International Drive Business Improvement District*

**International Drive Business  
Improvement District  
Transportation Projects Update**

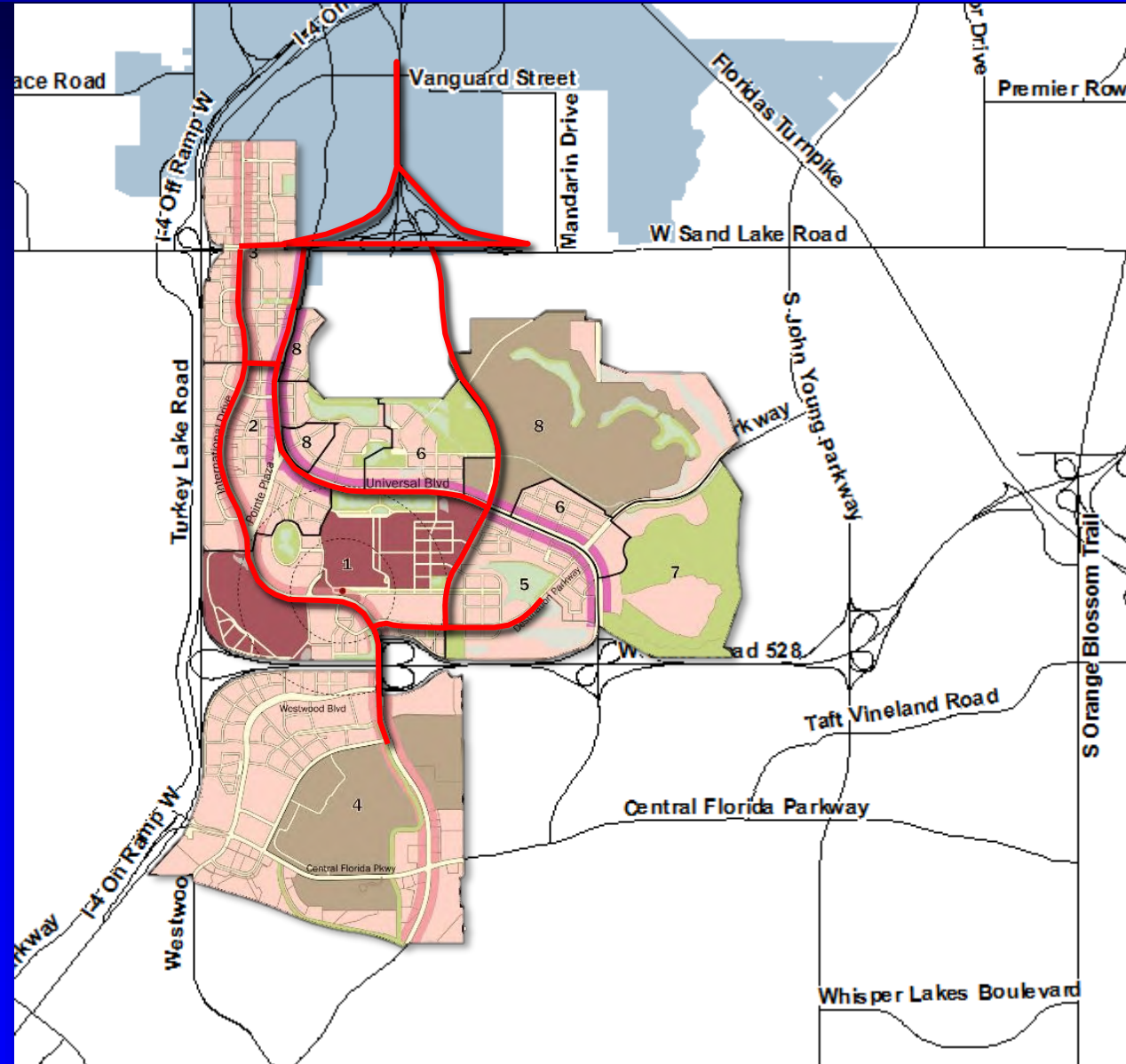
**June 26, 2019**

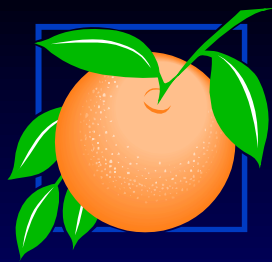


# Project Updates

## ■ Project List

- I-Drive Transit Feasibility Study
- I-Drive Transit Lanes
- Kirkman Road Extension

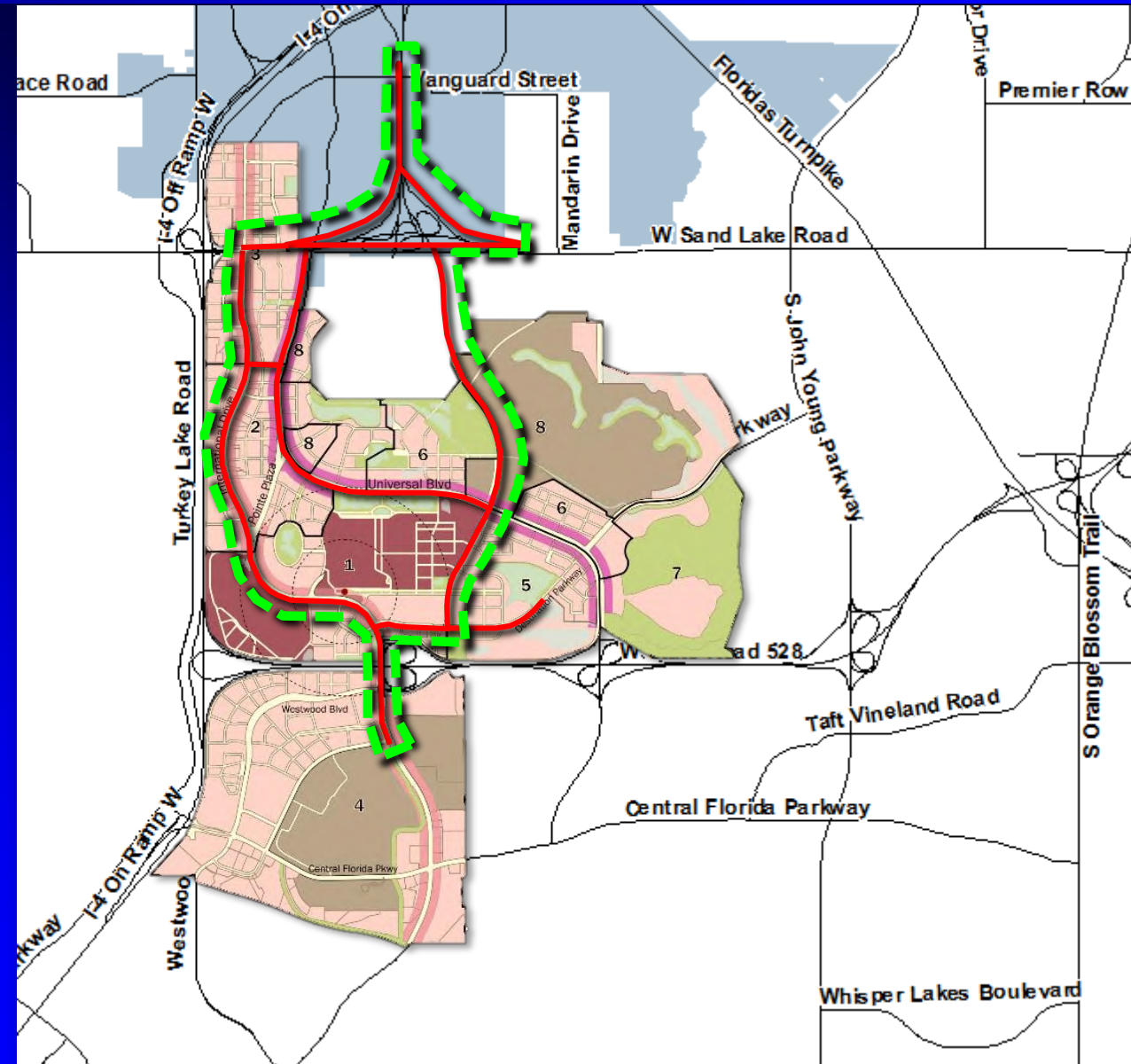


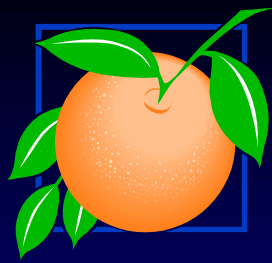


# Project Updates

## ■ Project List

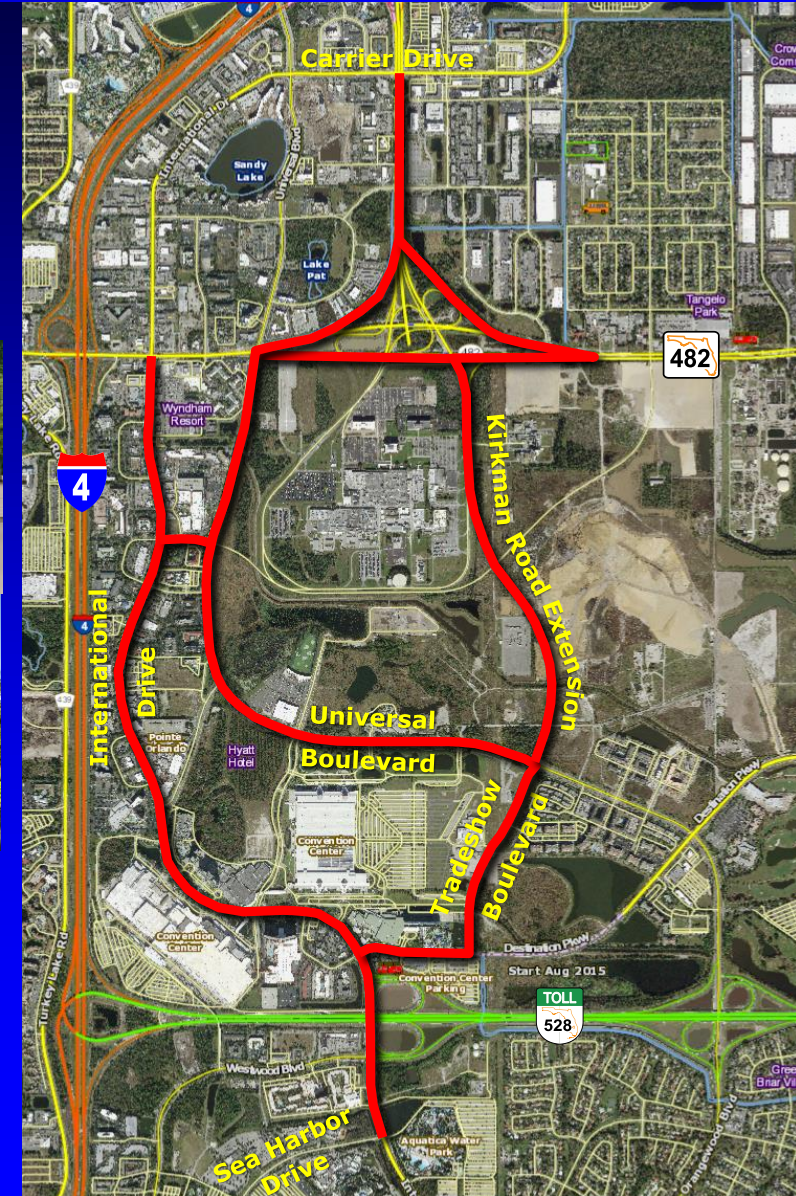
- I-Drive Transit Feasibility Study
- I-Drive Transit Lanes
- Kirkman Road Extension

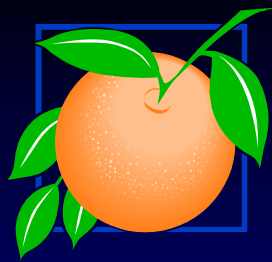




# Project Updates

- **International Drive Transit Feasibility and Alternative Technology Assessment**
  - Notice to Proceed 12-11-18
  - Premium Transit Coordinated with I-Drive Trolley
  - First Phase: International Drive from South of Beachline to Sand Lake Road
  - Change Order to BCC to Expand Study

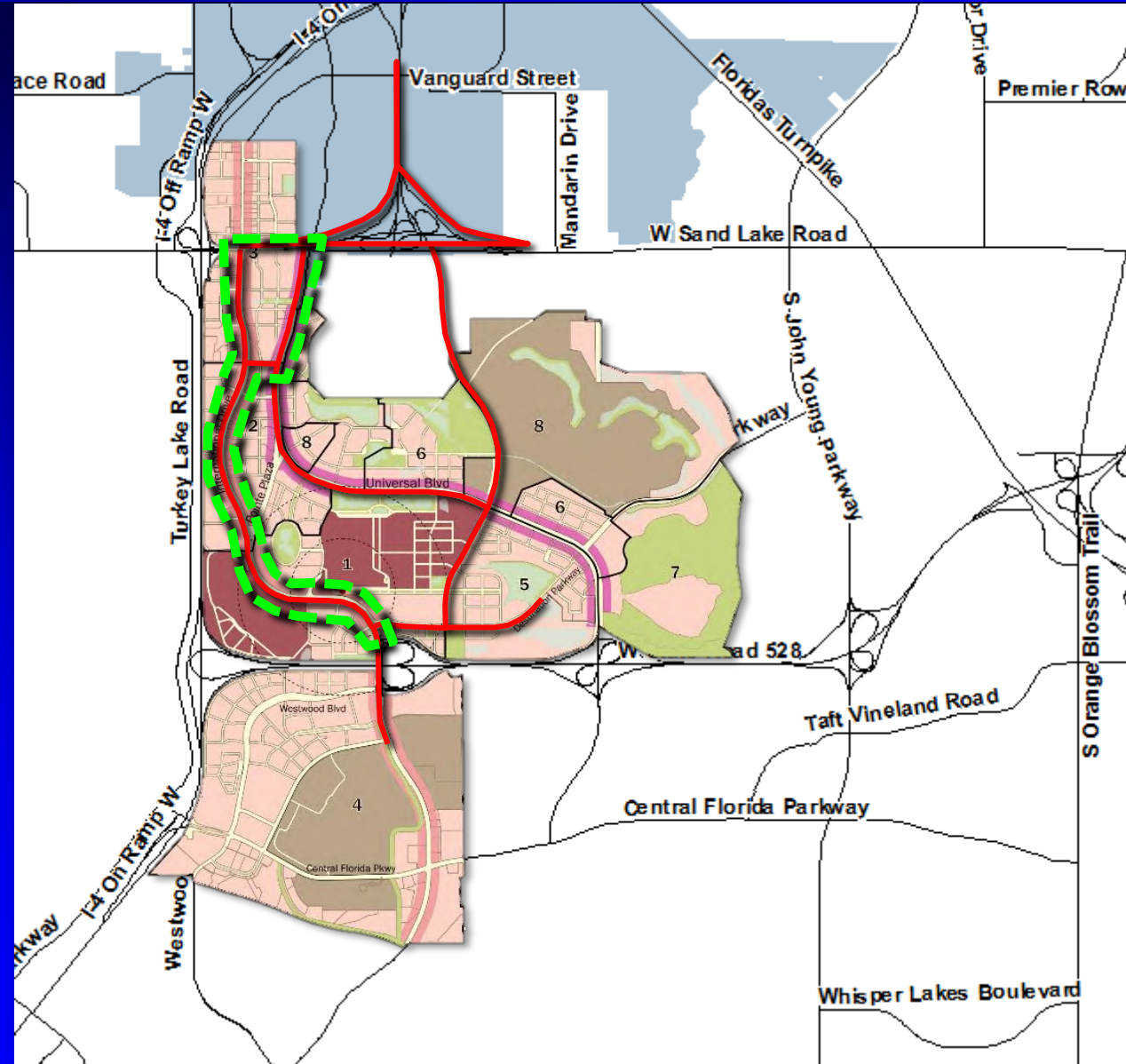


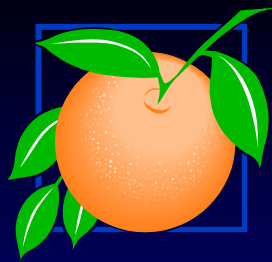


# Project Updates

## ■ Project List

- I-Drive Transit Feasibility Study
- I-Drive Transit Lanes
- Kirkman Road Extension

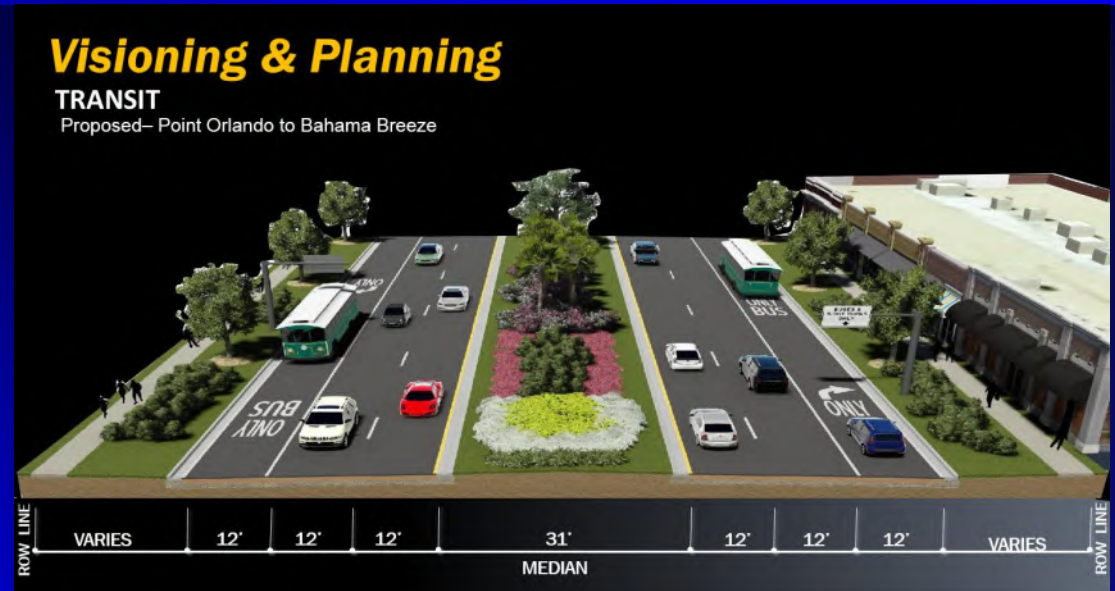


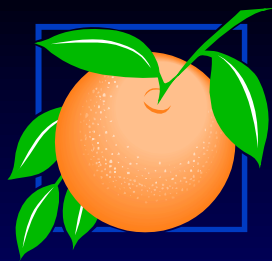


# Project Updates

## ■ I-Drive Transit Lanes

- Destination Parkway to Sand Lake Road
- 60% Design Plans
- Re-establishing Easement Documents
- 24 Month Construction Project
  - Estimated Start: Fall 2020
  - Estimated Finish Fall 2022
- Relieves Convention Center Congestion
- Accommodates I-Ride Trolley and Charter Buses
- Connector to Future Convention Center Circulator

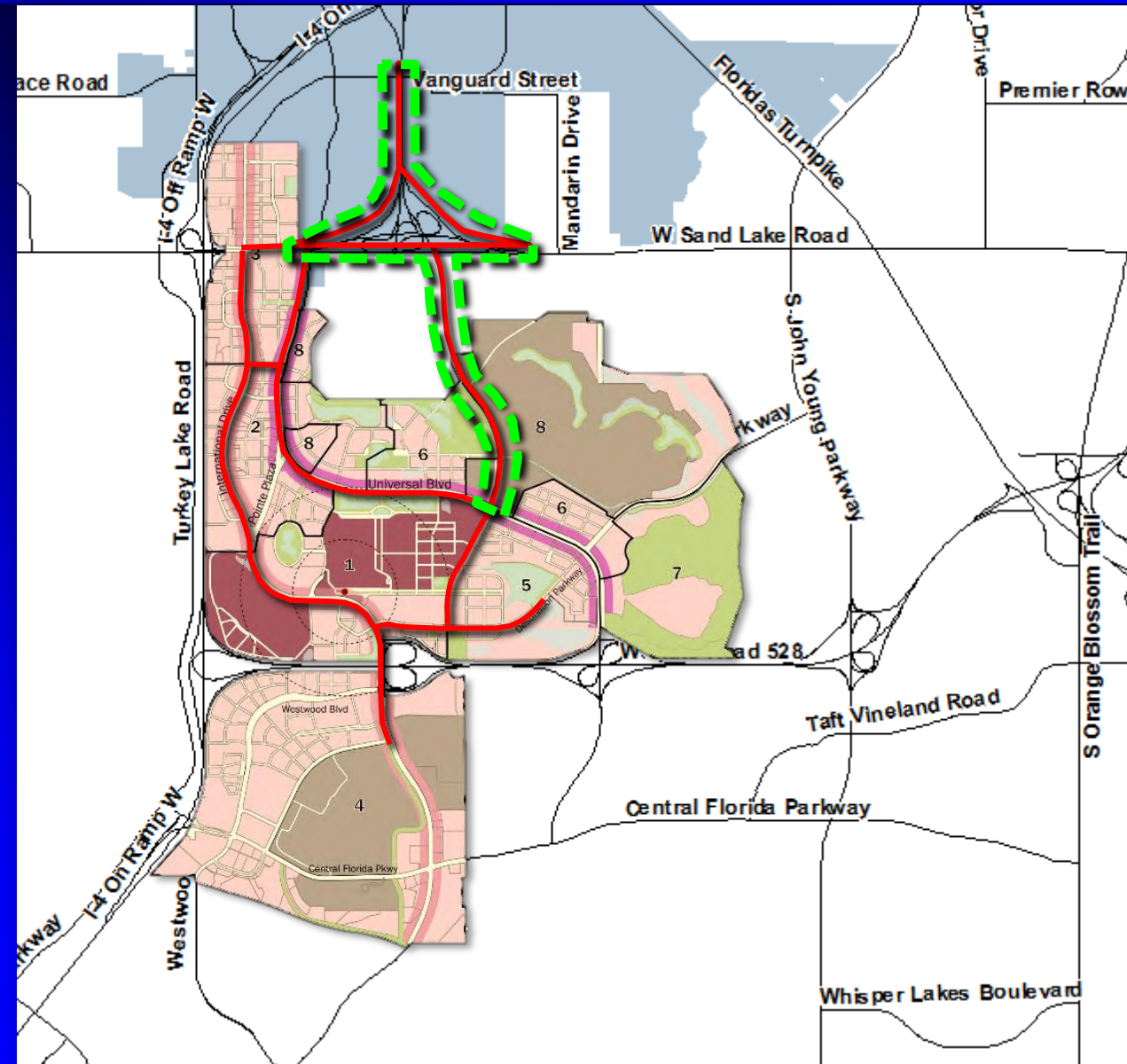


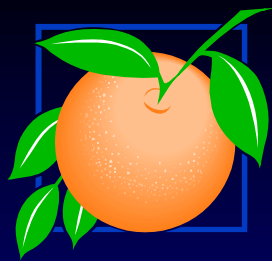


# Project Updates

## ■ Project List

- I-Drive Transit Feasibility Study
- I-Drive Transit Lanes
- **Kirkman Road Extension**

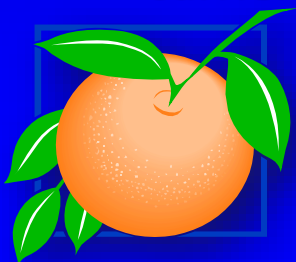




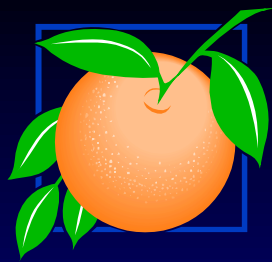
# Project Updates

## ▪ Kirkman Road Extension

- Universal Boulevard to Carrier Drive
- Design Underway All Segments
- Orange County Jurisdiction
  - Segments 1 and 2: Universal Boulevard to Southern Interchange Ramps with Sand Lake Road
- FDOT Jurisdiction
  - Segment 3: Southern Interchange Ramps to Carrier Drive





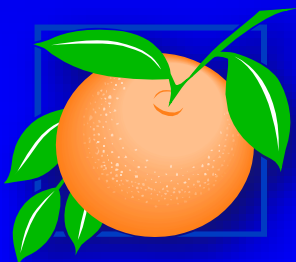
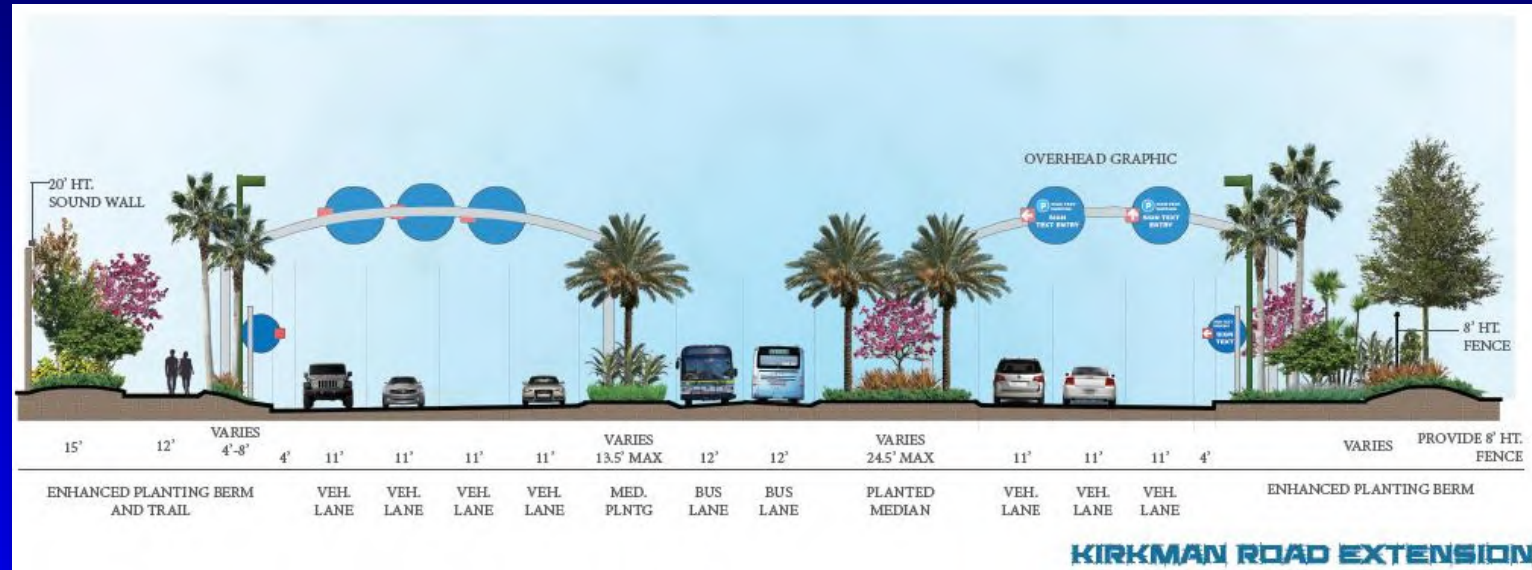


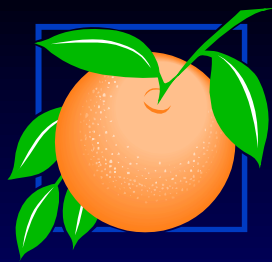
# Project Updates

## ■ Kirkman Road Extension

### – County (Segments 1 and 2)

- 7 – 8 General Travel Lanes
- Two Dedicated Transit Lanes
- 12-Foot Wide Multi-Use Path
- Bike Lanes and Sidewalks
- Enhanced Landscaping and Lighting



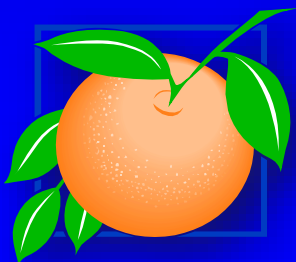


# Project Updates

## ▪ Kirkman Road Extension

### – FDOT (Segment 3)

- 9 General Travel Lanes
- Two Dedicated Transit Lanes
- 12-Foot Wide Multi-Use Path
- Bike Lanes and Sidewalks
- Enhanced Landscaping and Lighting
- Sand Lake Road Interchange Reconfiguration

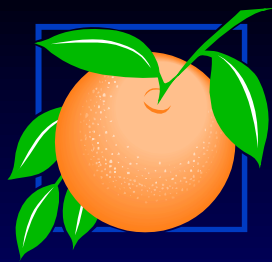


EXISTING INTERCHANGE



PROPOSED INTERCHANGE



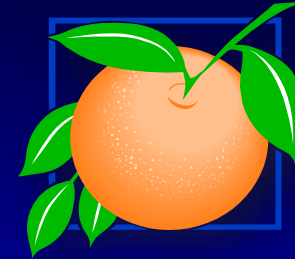


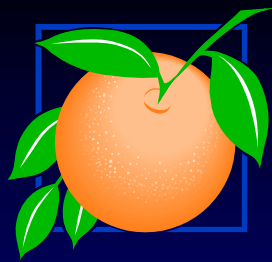
# Project Updates

## ▪ Kirkman Road Extension

### – MOU summary

- Estimated Project Cost: Approx. \$306 Million
- Funding Sources:
  - \$16 Million Grant from State of Florida Department of Economic Opportunity (DEO)
  - \$25 Million in Road Impact Fee Credits from County
  - \$60 Million CRA Trust Fund
  - (Lump Sum Payment from County Upon Project Completion)
  - \$40 Million CRA Incentive Funds Upon Project Completion (Annual Installment Payments from County Based on Incremental Growth in Universal's Taxable Property Values in CRA)
  - Balance of Project Cost by Universal





# Project Updates

## ▪ Kirkman Road Extension

### – MOU summary (Continued)

- Universal to Design, Engineer, Permit and Construct Project
- Universal to Donate Right-of-Way to County and FDOT Upon Project Completion
- Construction of Project Planned to Commence January 2020
- Project Anticipated to be Completed Within 3-5 Years
- MOU Requires County and Universal to Negotiate Entering into Roadway and Infrastructure Agreement Within Next 6-9 Months Detailing Duties and Rights of Both Parties
- County to Hold any Public Hearings Necessary to Facilitate Project Construction by Universal
- County and Universal to Enter into any Other Necessary Agreements

